

UNCLASSIFIED

UNCLASSIFIED

CIC-14 REPORT COLLECTION  
**REPRODUCTION  
COPY**

VERIFIED UNCLASSIFIED  
NVA 6/18/79

LOS ALAMOS NATIONAL LABORATORY  
  
3 9338 00414 7517

**DO NOT CIRCULATE**  
**PERMANENT RETENTION  
REQUIRED BY CONTRACT**

UNCLASSIFIED

UNCLASSIFIED

[REDACTED]

UNCLASSIFIED

LOS ALAMOS SCIENTIFIC LABORATORY  
of the  
UNIVERSITY OF CALIFORNIA

Report written:  
February 17, 1953

LA-1508

This document consists of 25 pages

[REDACTED]

**PUBLICLY RELEASABLE**

Per J. A. Brown, FSS-16 Date: 9/88/95

By Theresa Ballago, CIC-14 Date: 10/5/95

A HIGH-VACUUM CASTING FURNACE FOR PLUTONIUM

[REDACTED]

Classification changed to UNCLASSIFIED  
by authority of the U. S. Atomic Energy Commission,  
Per W. F. Carroll 8-16-56  
By REPORT LIBRARY V. Martiney  
8-23-56

Work done by:  
J. W. Anderson  
R. L. Thomas

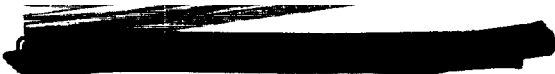
Report written by:  
J. W. Anderson

UNCLASSIFIED

TECHNOLOGY--PLUTONIUM

[REDACTED]





UNCLASSIFIED

TECHNOLOGY-PLUTONIUM

Distributed: MAR 11 1953

LA-1508

Los Alamos Report Library	1 - 20
Argonne National Laboratory	21 - 24
Atomic Energy Commission, Washington	25 - 27
California Research and Development Company	28
Carbide and Carbon Chemicals Company (ORNL)	29 - 32
Chicago Patent Group	33
Dow Chemical Company (Rocky Flats)	34
duPont Company	35 - 39
General Electric Company, Richland	40 - 43
Hanford Operations Office	44
Iowa State College	45
Knolls Atomic Power Laboratory	46 - 49
Massachusetts Institute of Technology (Kaufmann for Benedict)	50
Patent Branch, Washington	51
Savannah River Operations Office, Augusta	52
Savannah River Operations Office, Wilmington	53
Technical Information Service, Oak Ridge	54 - 68

UNCLASSIFIED



UNCLASSIFIED

ABSTRACT

A high-vacuum casting furnace with an internal diameter of 15 inches has been designed, fabricated, and installed at LASL (DP West). The furnace was designed to accommodate casting crucibles up to 7 inches OD; however with a larger diameter heating element, casting crucibles up to 9 inches could be accommodated.

This report describes the basic features of the furnace and presents engineering drawings of both the furnace and furnace box.

UNCLASSIFIED



UNCLASSIFIED

A HIGH-VACUUM CASTING FURNACE FOR  
PLUTONIUM

Figures I and II are photographs of the furnace looking through the front furnace box window. The working diameter inside of the safety crucible shown in the furnace (Figure I) is approximately 7 inches. The crucible in the basket to the right of the furnace holds the casting crucible and is lowered into the furnace with the aid of hooks. The well extending out of the furnace lid at the left contains thermocouples used for routine control. The flexible lead through the lid is a test thermocouple used for calibrating different set-ups made in the furnace.

Figure II shows the unit with the lid closed. A low pressure hydraulic cylinder is used to raise and lower the lid. The slide rod on top of the lid can be removed by turning the bar clockwise and then pulling to the right.

The furnace is heated by two parallel 10 ohm .050" tungsten wire coils wound on the outside of a **9 inch grooved alundum sleeve**. The unit will heat to 1000°C in 2 hours with both legs drawing 25 amp at 80-90 volts.

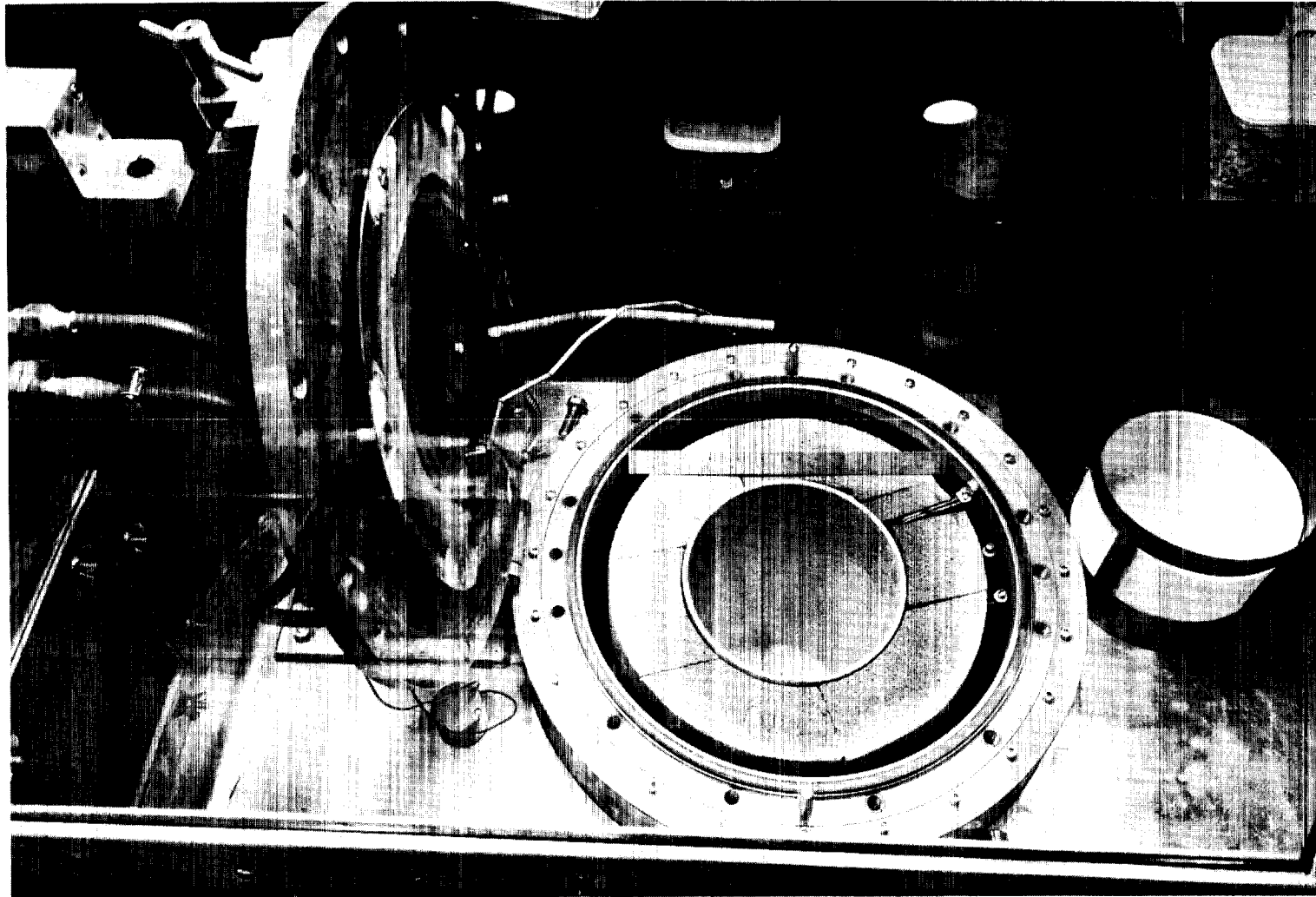
A model MC 275.91 D.P.I. oil diffusion pump followed by a size 5-5-6 Kinney mechanical pump are connected to the unit. By using a house roughing system and flushing the unit twice with helium, the above pumping system will pull down to 1 micron in 15 minutes.

Ultimate vacuums in the order of 0.02 micron have been obtained after 12 hours of pumping. In routine operation the unit can be expected to have a leak rate of less than 0.5 micron per minute.

Design features which are of general interest are listed below.

1. The entire furnace can can be removed from the furnace box.
2. A larger diameter heating element can be installed in the present furnace can.
3. The heating element leads are readily accessible and a new heating element can be easily installed.
4. Cooling coils are located on the outside of the furnace can and lid so that there is no chance of water getting into the furnace proper.
5. The furnace box windows can be easily replaced if necessary.
6. The furnace box CWS filter can be replaced by inserting a new one from the outside and removing the old one from inside of the box.
7. Brass is a very satisfactory construction material for a furnace of this type.

A complete set of engineering drawings of the furnace and furnace box (2Y-53122, B-1, D-2-18) are given on the following pages.



9

Figure I - Casting Furnace (Top Open)

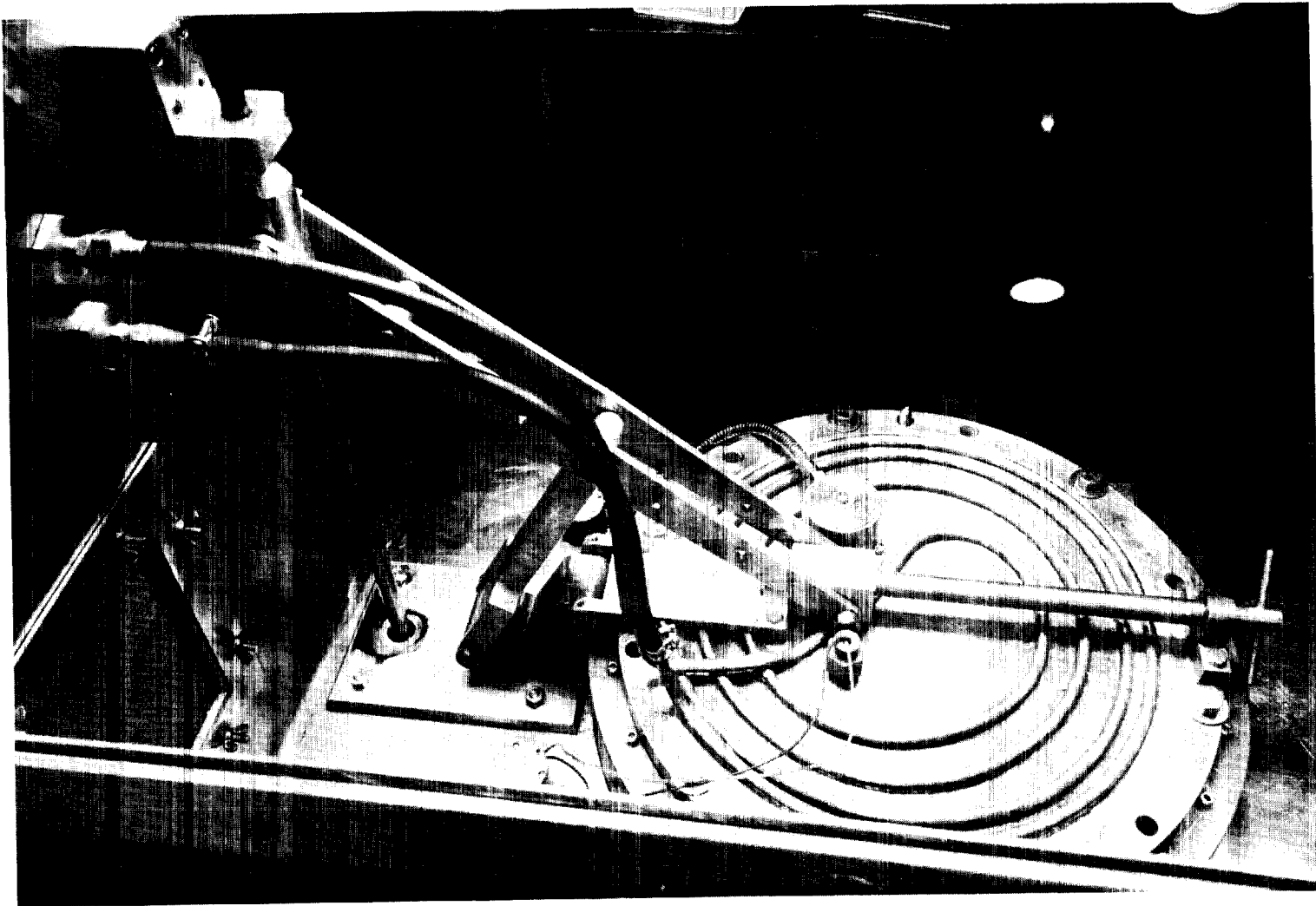


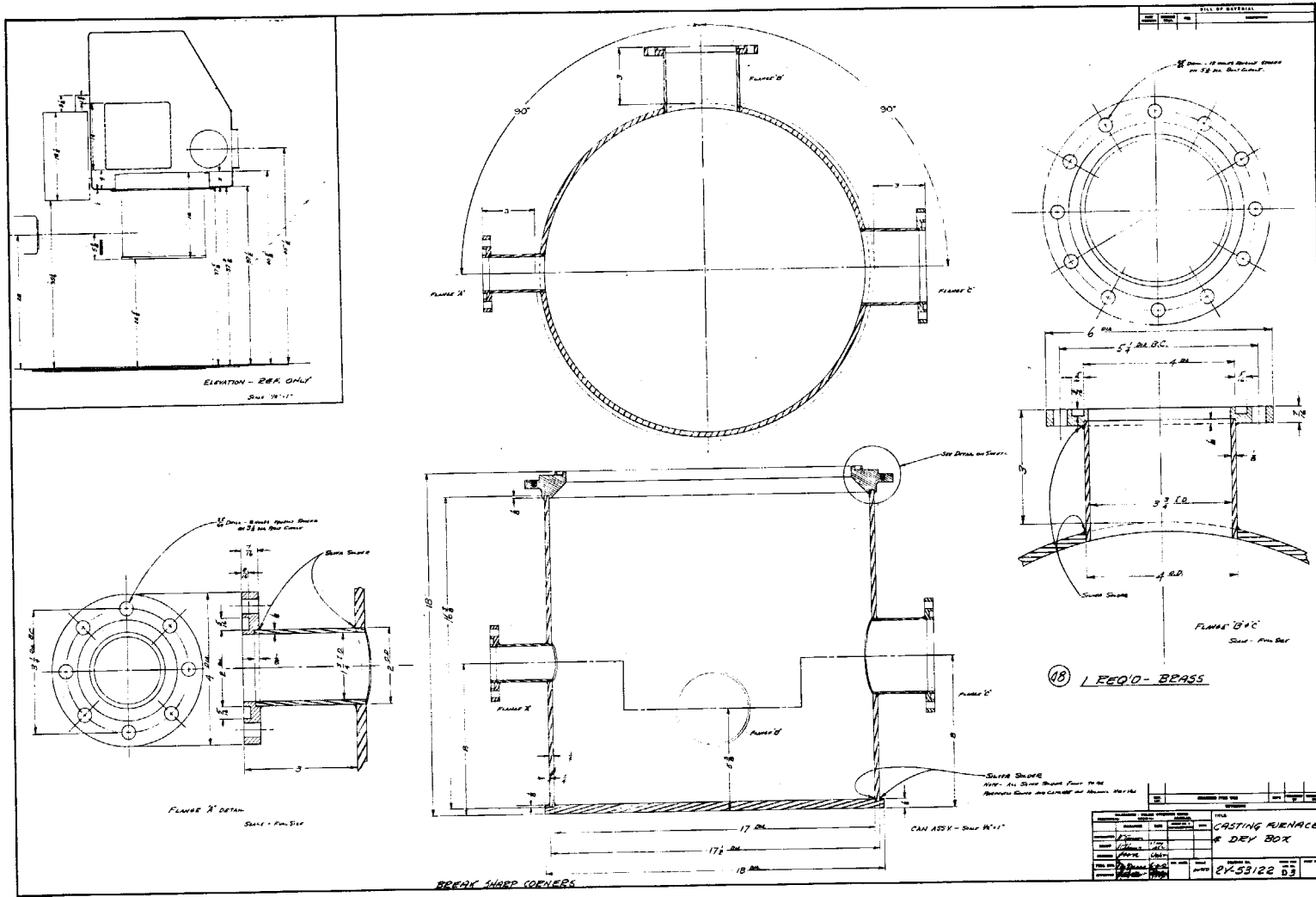
Figure II - Casting Furnace (Top Closed)





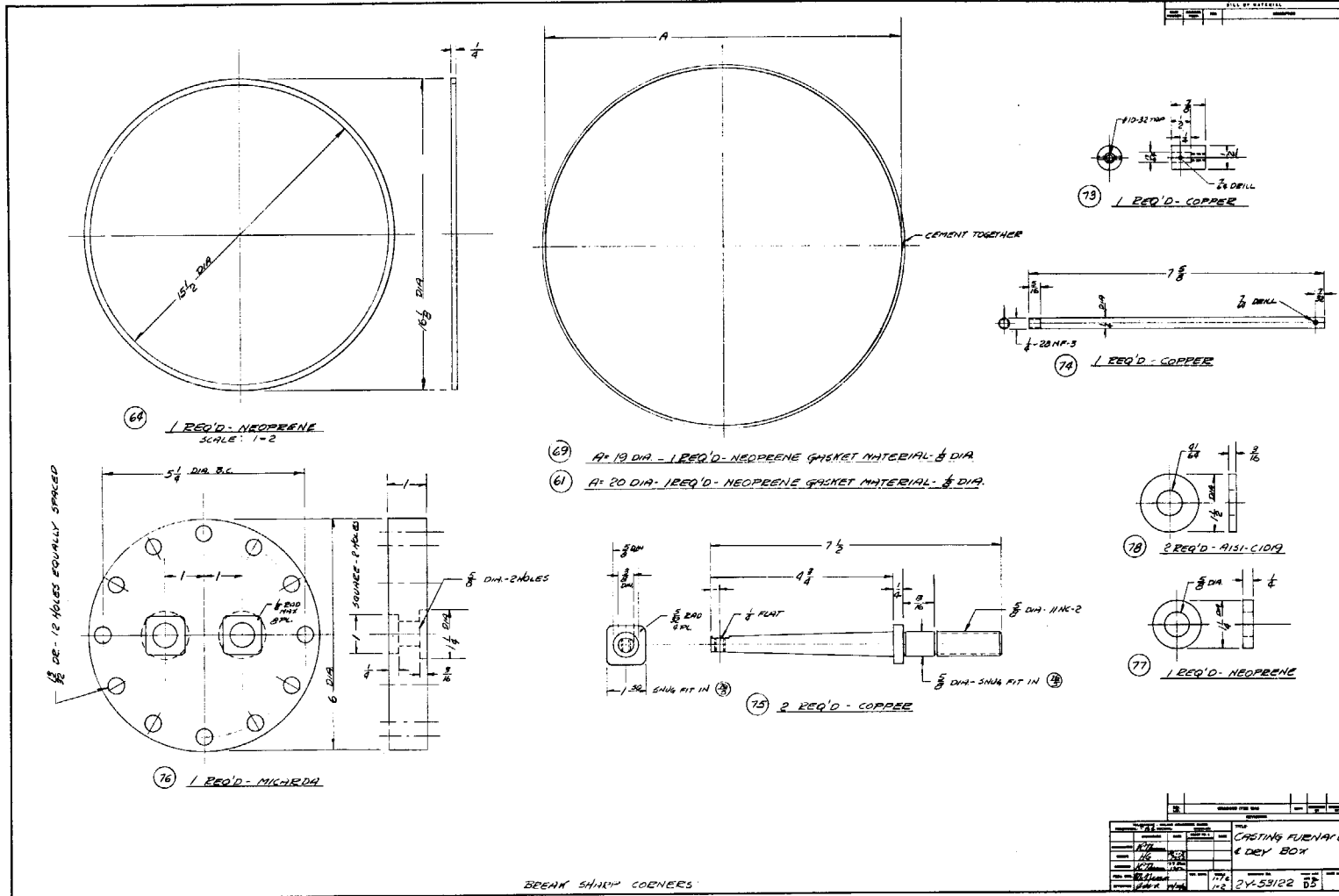


10

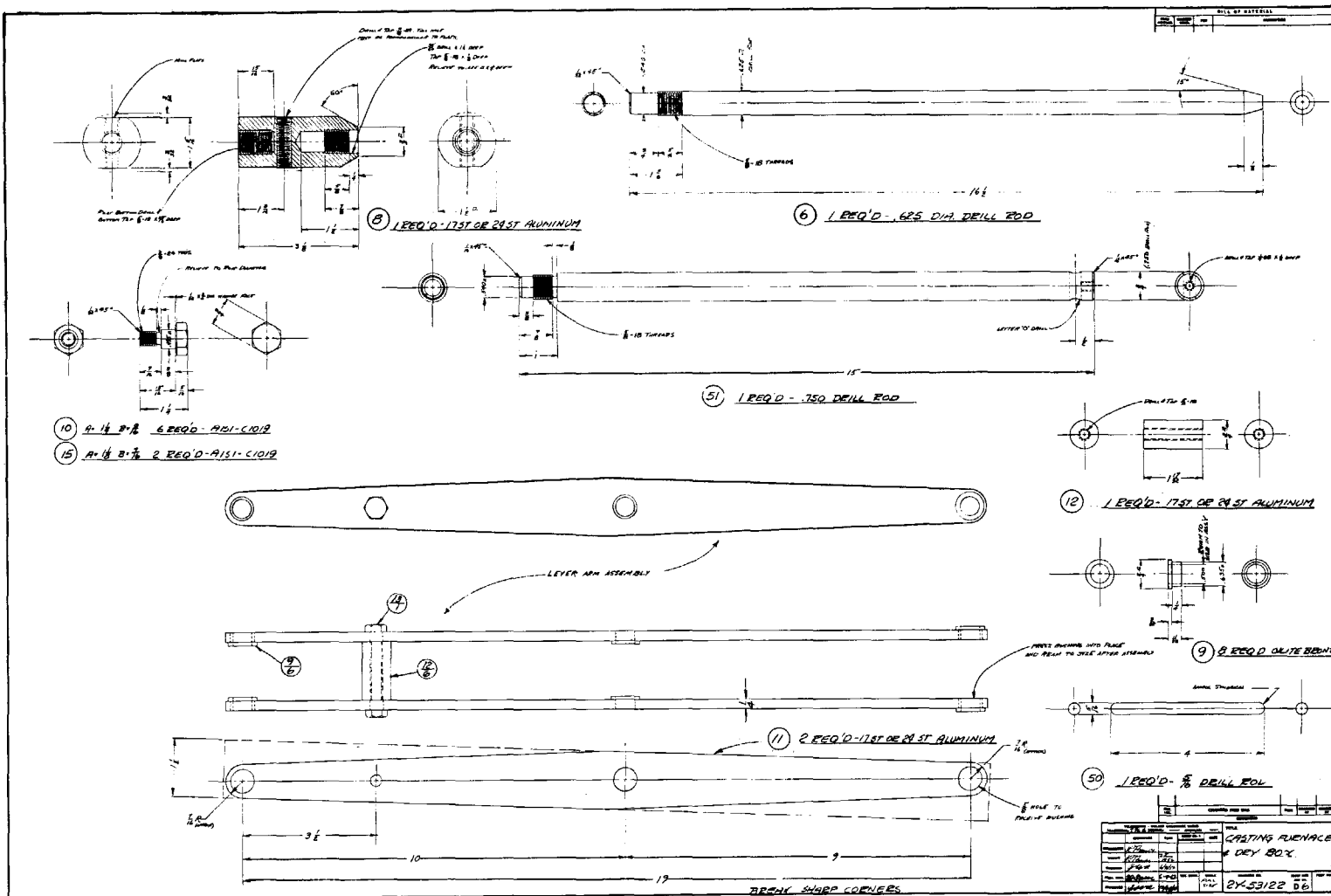




12

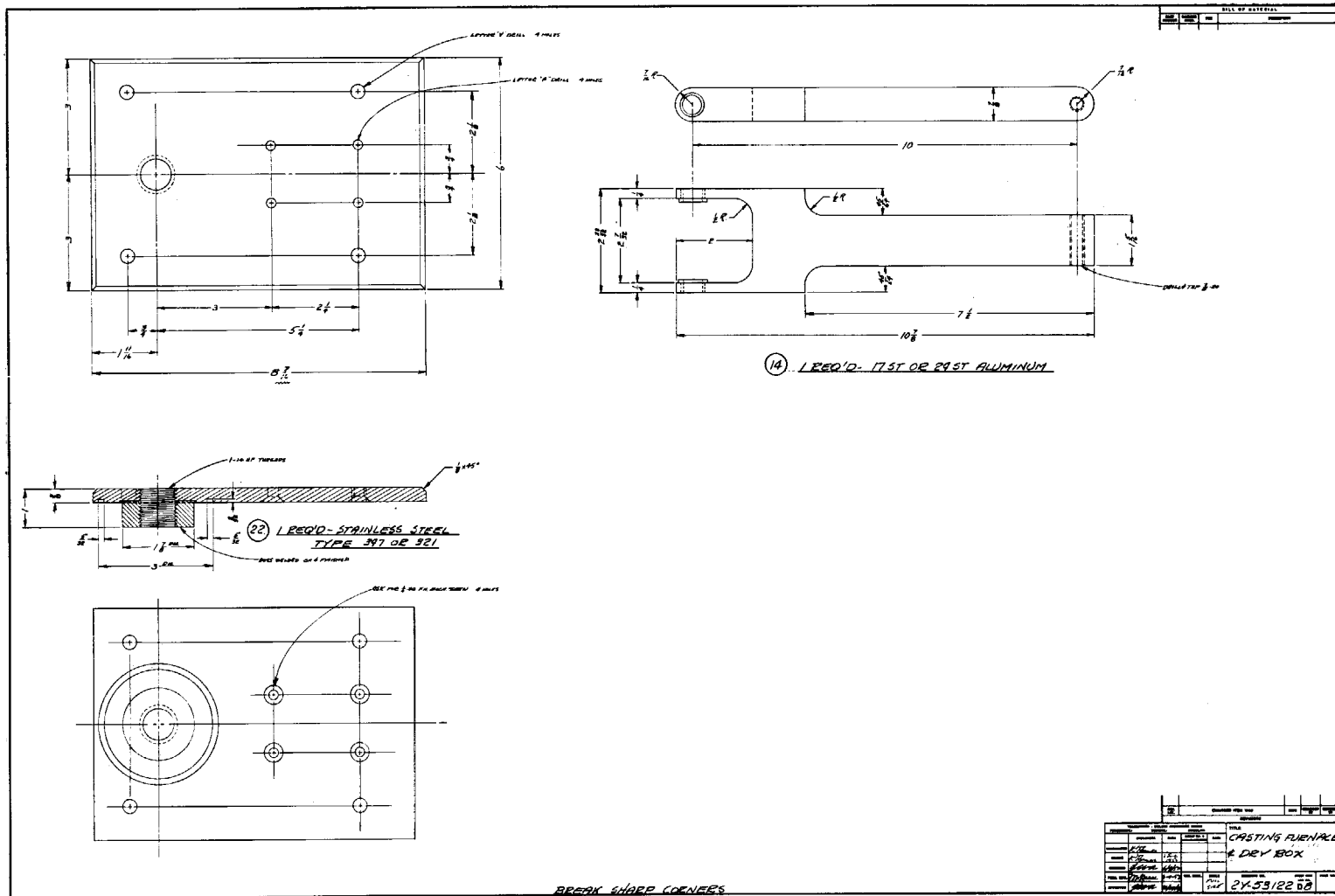


13

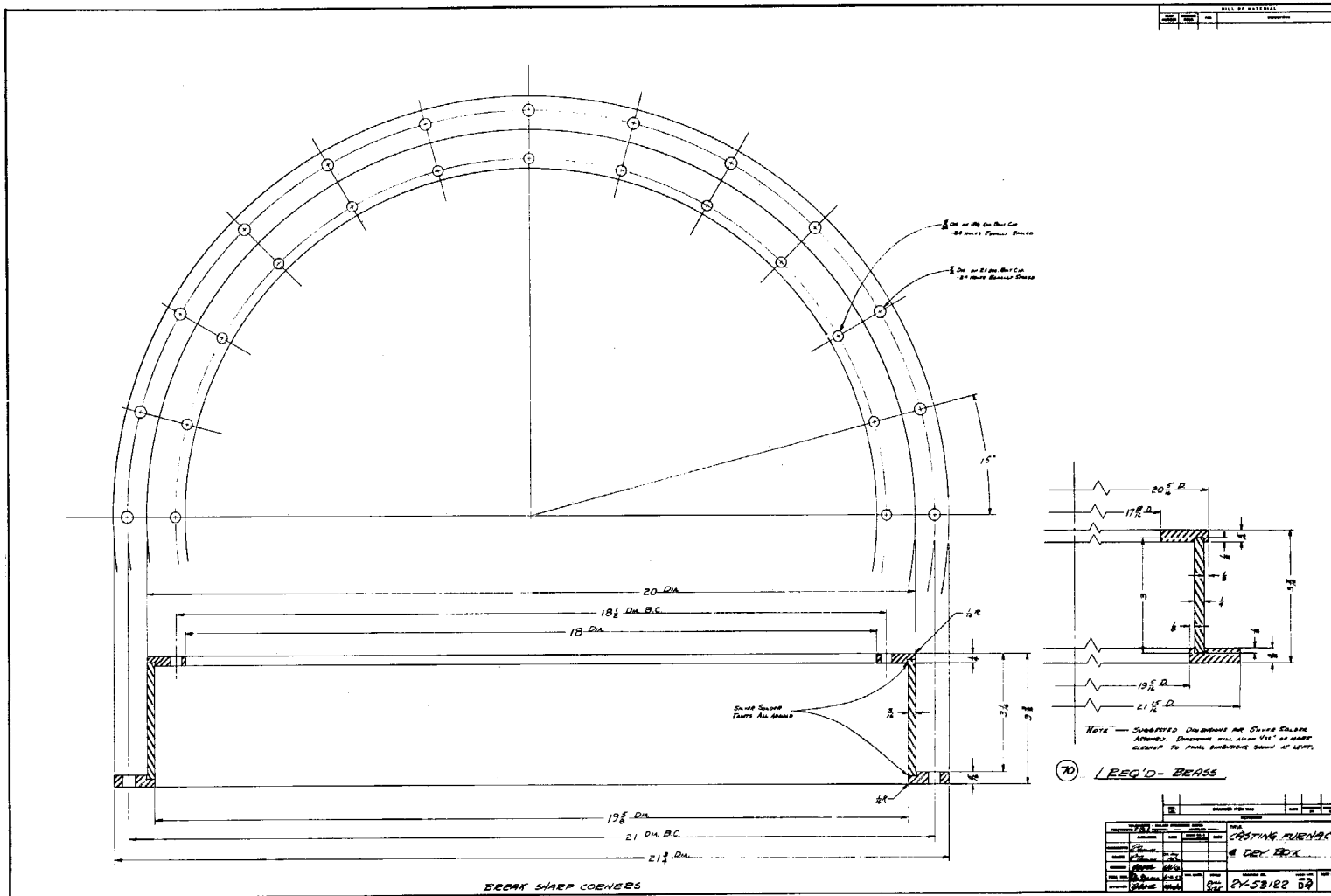




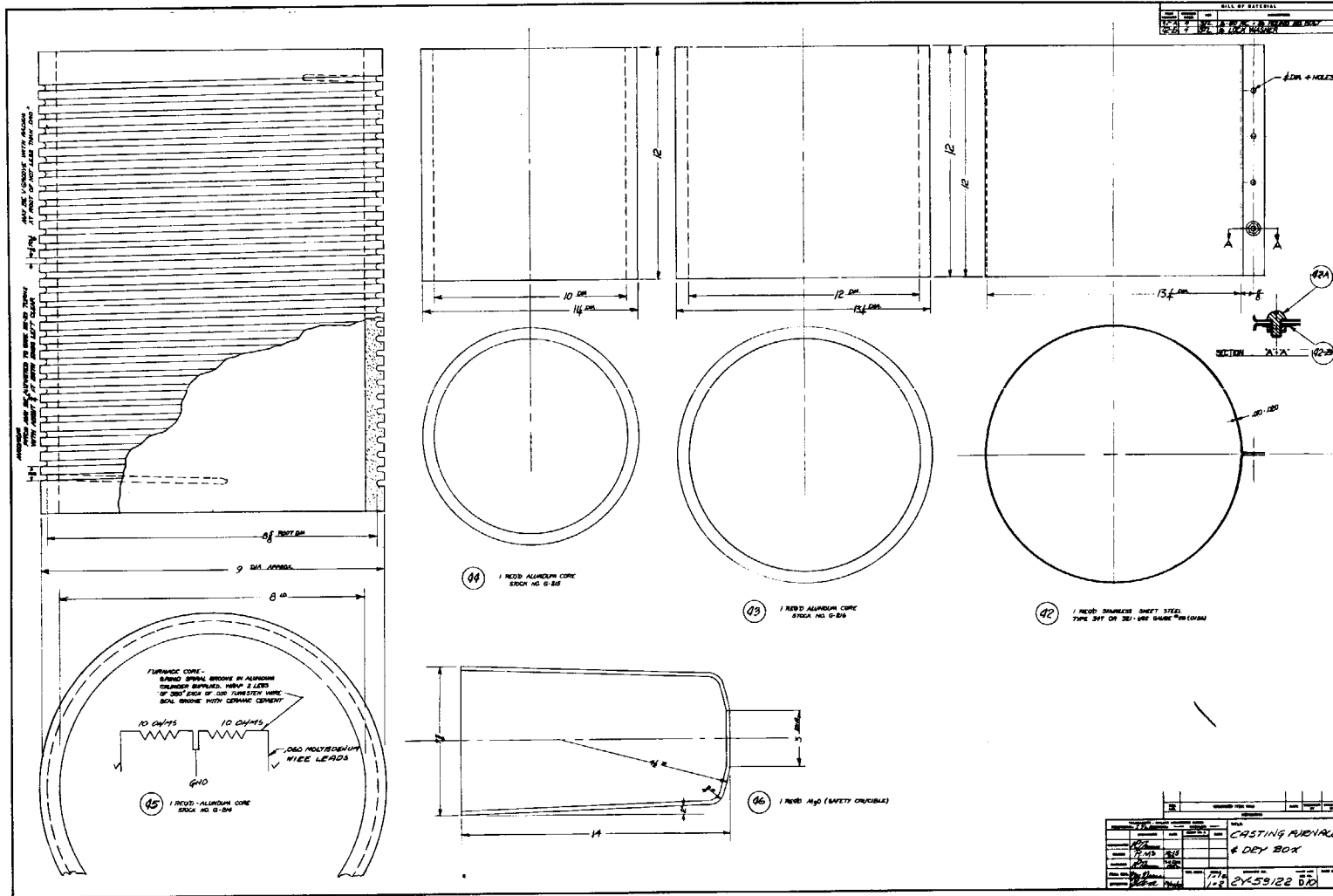
15



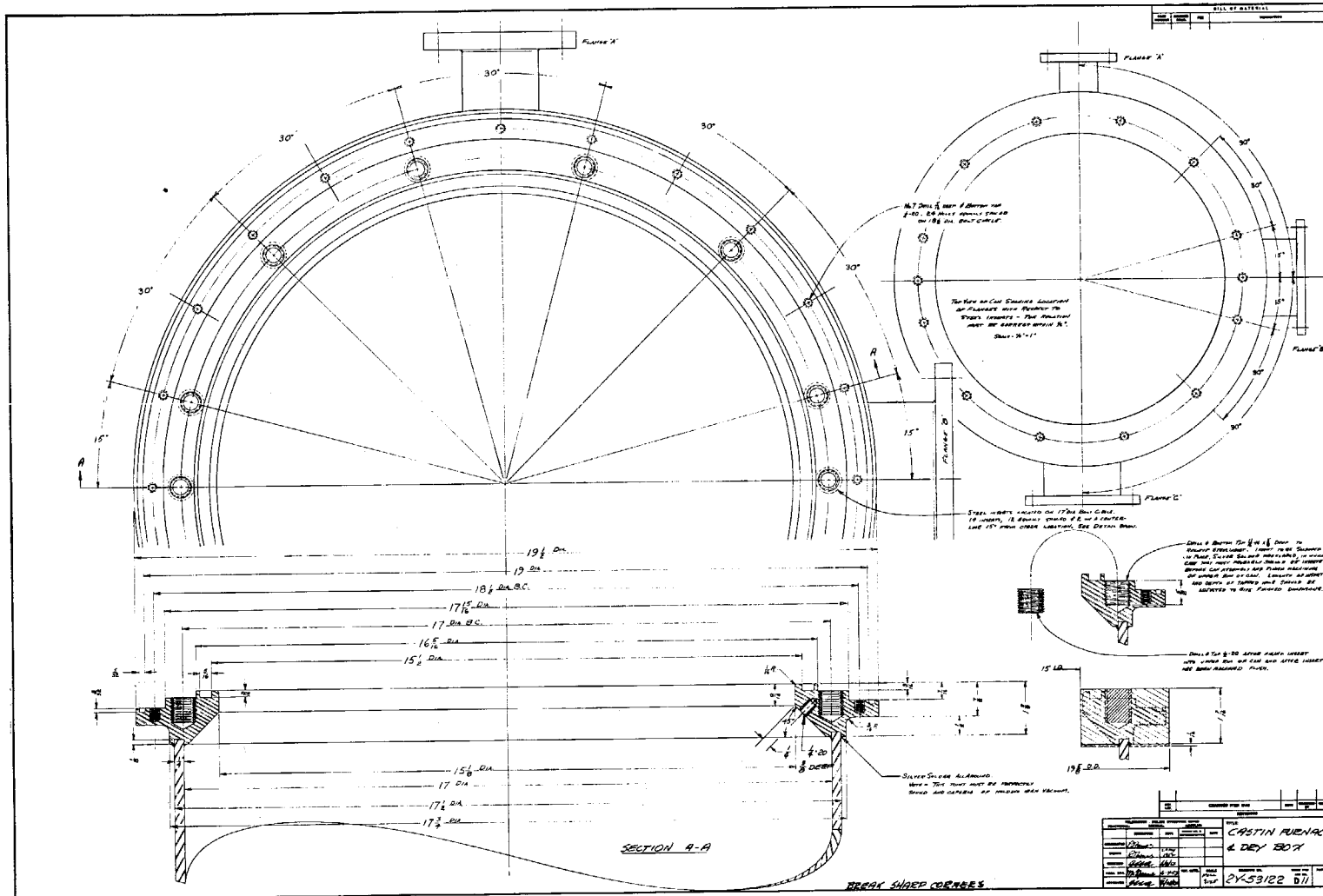




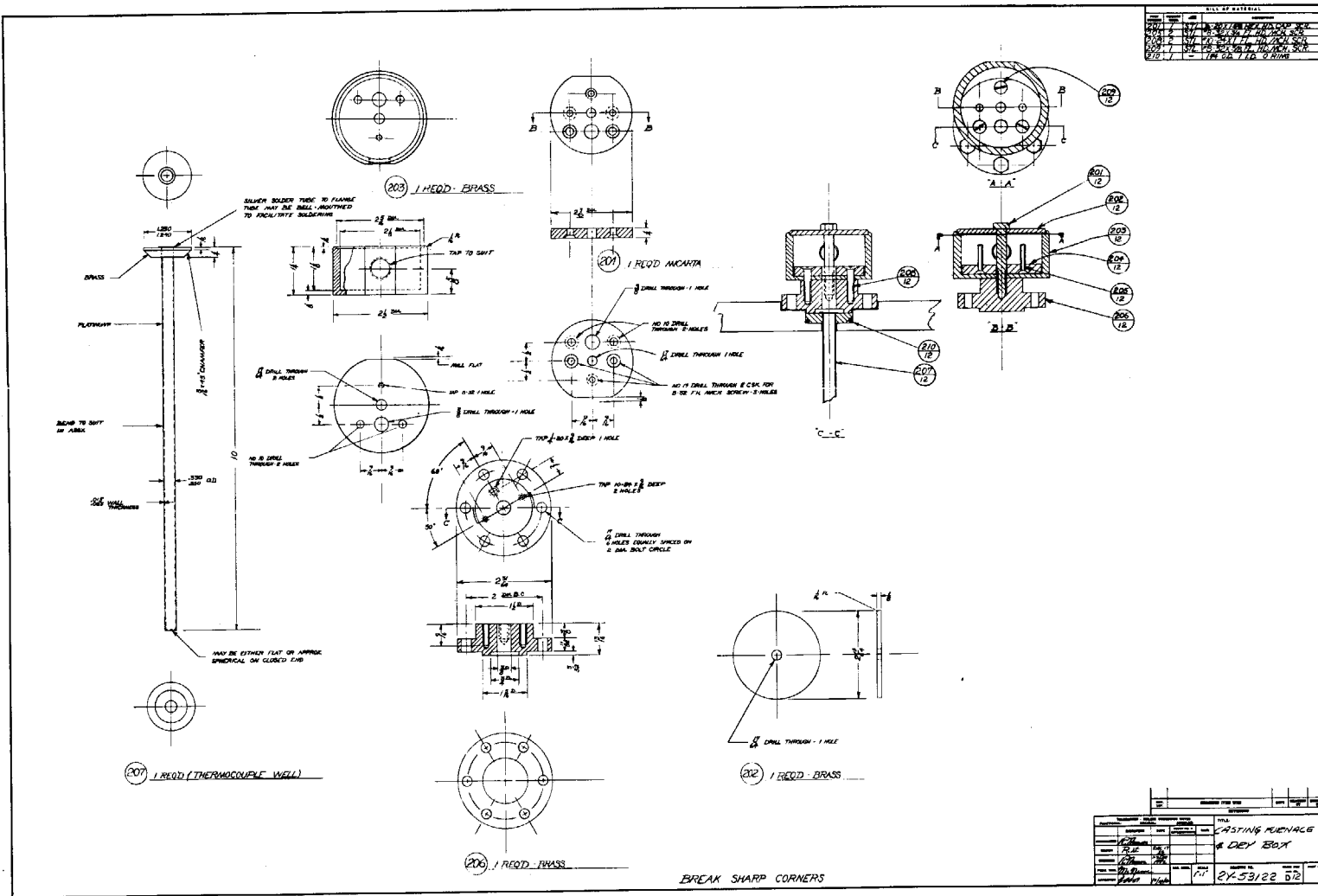
17



18



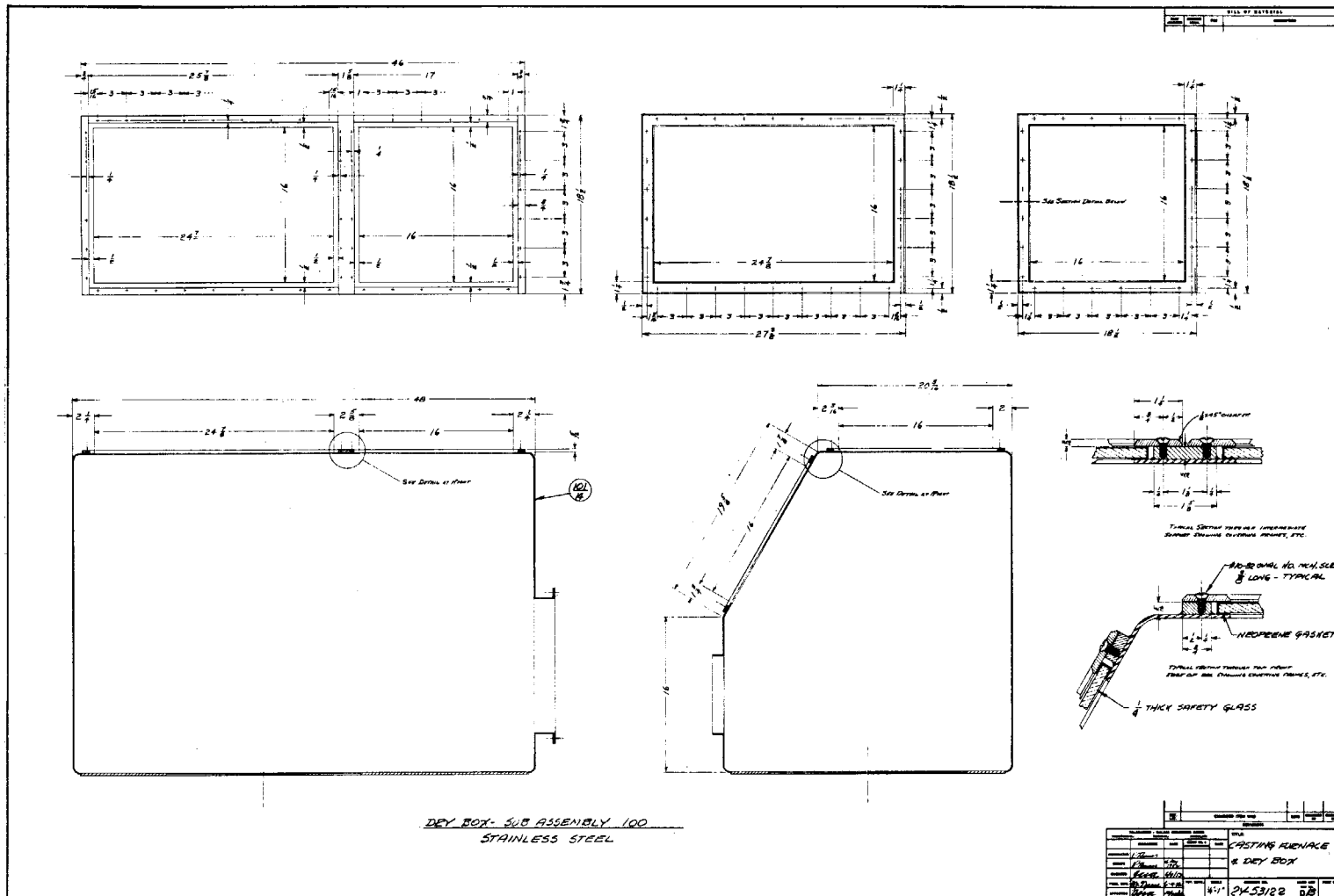
19



LIST OF MATERIAL	
200	1 PEGD BRASS
201	1 PEGD ANCHOR
202	1 PEGD BRASS
203	1 PEGD BRASS
204	1 PEGD BRASS
205	1 PEGD BRASS
206	1 PEGD BRASS
207	1 PEGD (THERMOCOUPLE WELL)
208	1 PEGD BRASS
209	1 PEGD BRASS
210	1 PEGD BRASS
211	1 PEGD BRASS
212	1 PEGD BRASS
213	1 PEGD BRASS
214	1 PEGD BRASS
215	1 PEGD BRASS
216	1 PEGD BRASS
217	1 PEGD BRASS
218	1 PEGD BRASS
219	1 PEGD BRASS
220	1 PEGD BRASS
221	1 PEGD BRASS
222	1 PEGD BRASS
223	1 PEGD BRASS
224	1 PEGD BRASS
225	1 PEGD BRASS
226	1 PEGD BRASS
227	1 PEGD BRASS
228	1 PEGD BRASS
229	1 PEGD BRASS
230	1 PEGD BRASS
231	1 PEGD BRASS
232	1 PEGD BRASS
233	1 PEGD BRASS
234	1 PEGD BRASS
235	1 PEGD BRASS
236	1 PEGD BRASS
237	1 PEGD BRASS
238	1 PEGD BRASS
239	1 PEGD BRASS
240	1 PEGD BRASS

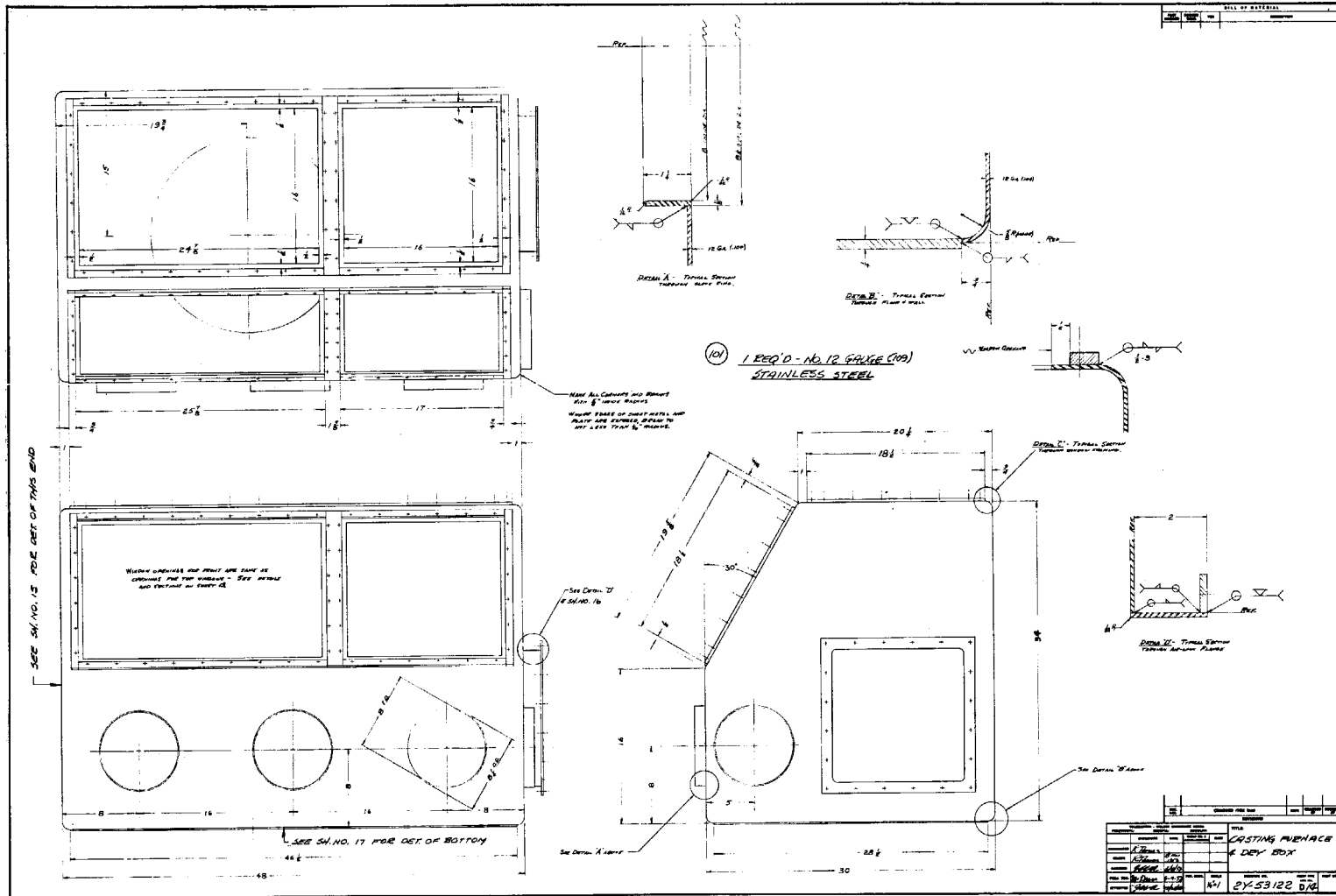
CASTING PLUNGE & DEW BOX	
200	1 PEGD BRASS
201	1 PEGD ANCHOR
202	1 PEGD BRASS
203	1 PEGD BRASS
204	1 PEGD BRASS
205	1 PEGD BRASS
206	1 PEGD BRASS
207	1 PEGD (THERMOCOUPLE WELL)
208	1 PEGD BRASS
209	1 PEGD BRASS
210	1 PEGD BRASS
211	1 PEGD BRASS
212	1 PEGD BRASS
213	1 PEGD BRASS
214	1 PEGD BRASS
215	1 PEGD BRASS
216	1 PEGD BRASS
217	1 PEGD BRASS
218	1 PEGD BRASS
219	1 PEGD BRASS
220	1 PEGD BRASS
221	1 PEGD BRASS
222	1 PEGD BRASS
223	1 PEGD BRASS
224	1 PEGD BRASS
225	1 PEGD BRASS
226	1 PEGD BRASS
227	1 PEGD BRASS
228	1 PEGD BRASS
229	1 PEGD BRASS
230	1 PEGD BRASS
231	1 PEGD BRASS
232	1 PEGD BRASS
233	1 PEGD BRASS
234	1 PEGD BRASS
235	1 PEGD BRASS
236	1 PEGD BRASS
237	1 PEGD BRASS
238	1 PEGD BRASS
239	1 PEGD BRASS
240	1 PEGD BRASS

BREAK SHARP CORNERS

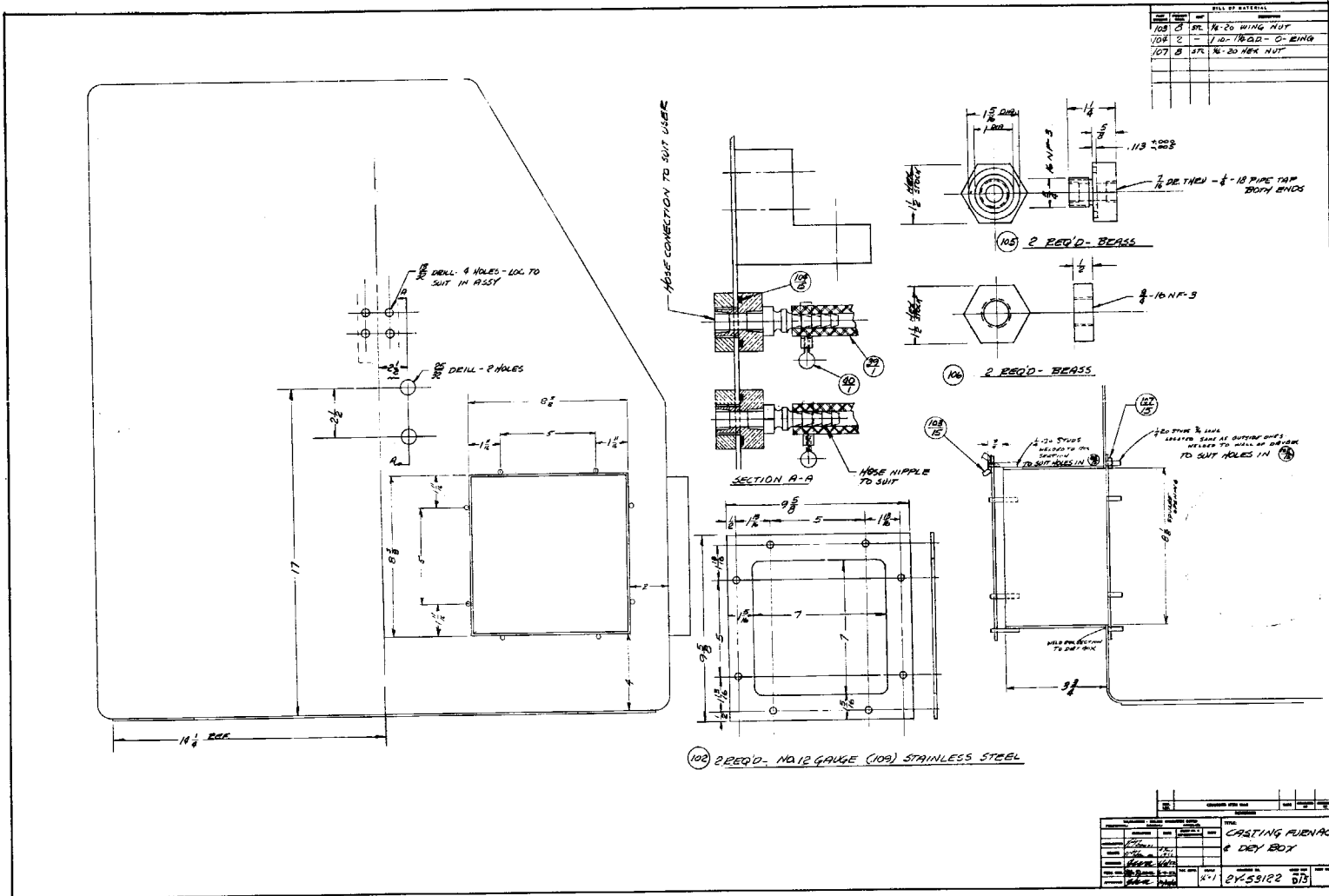


20

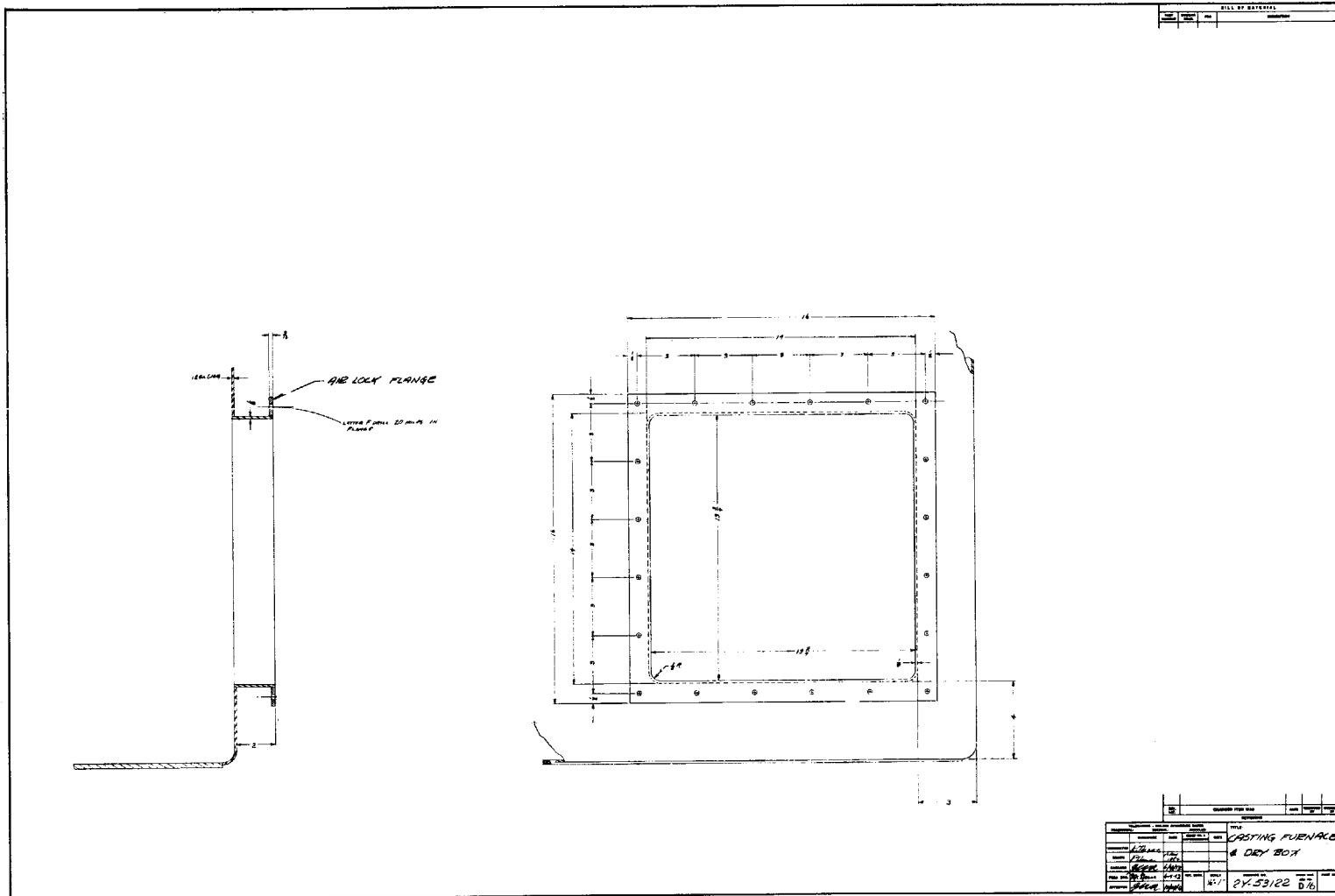
21



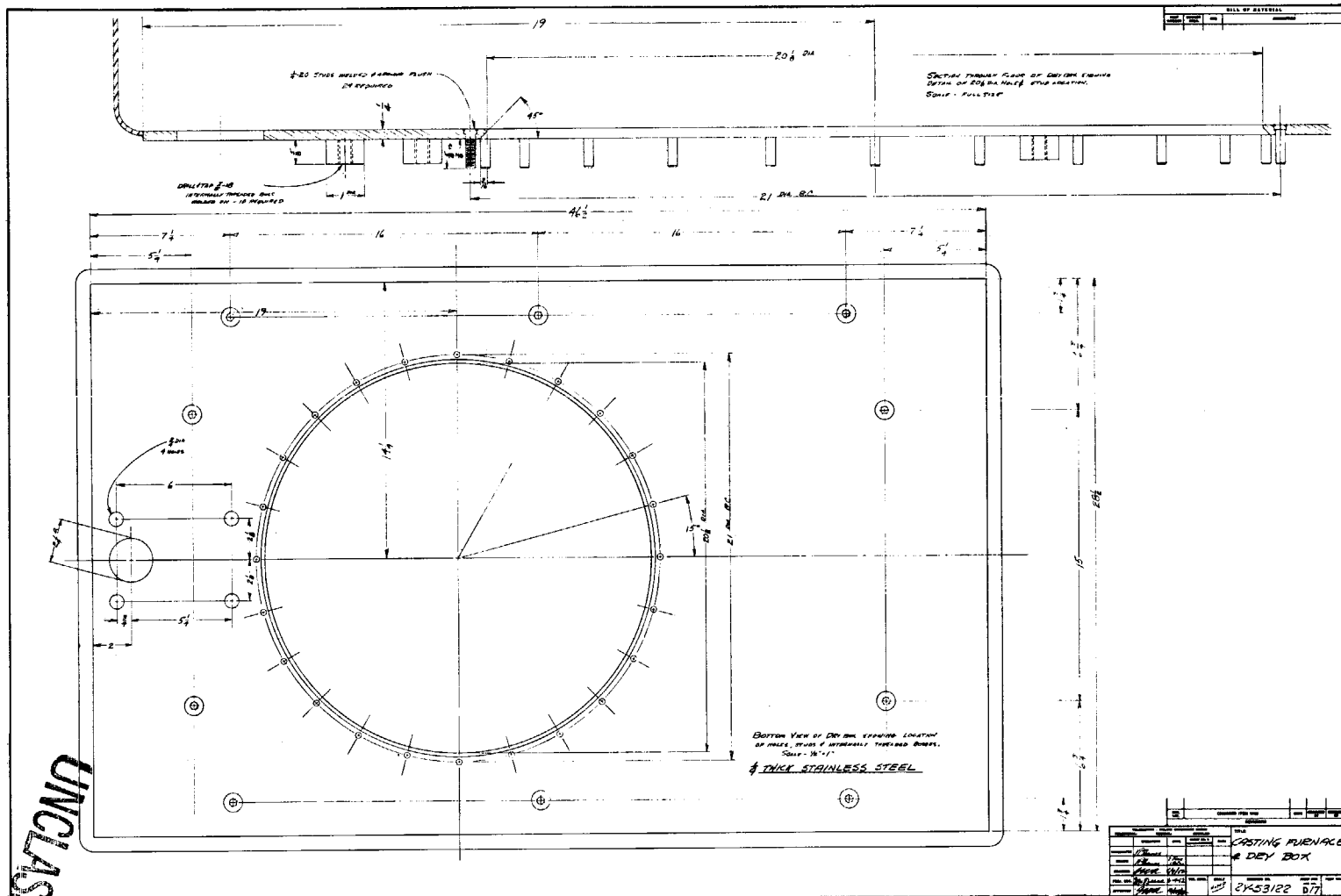
22



23







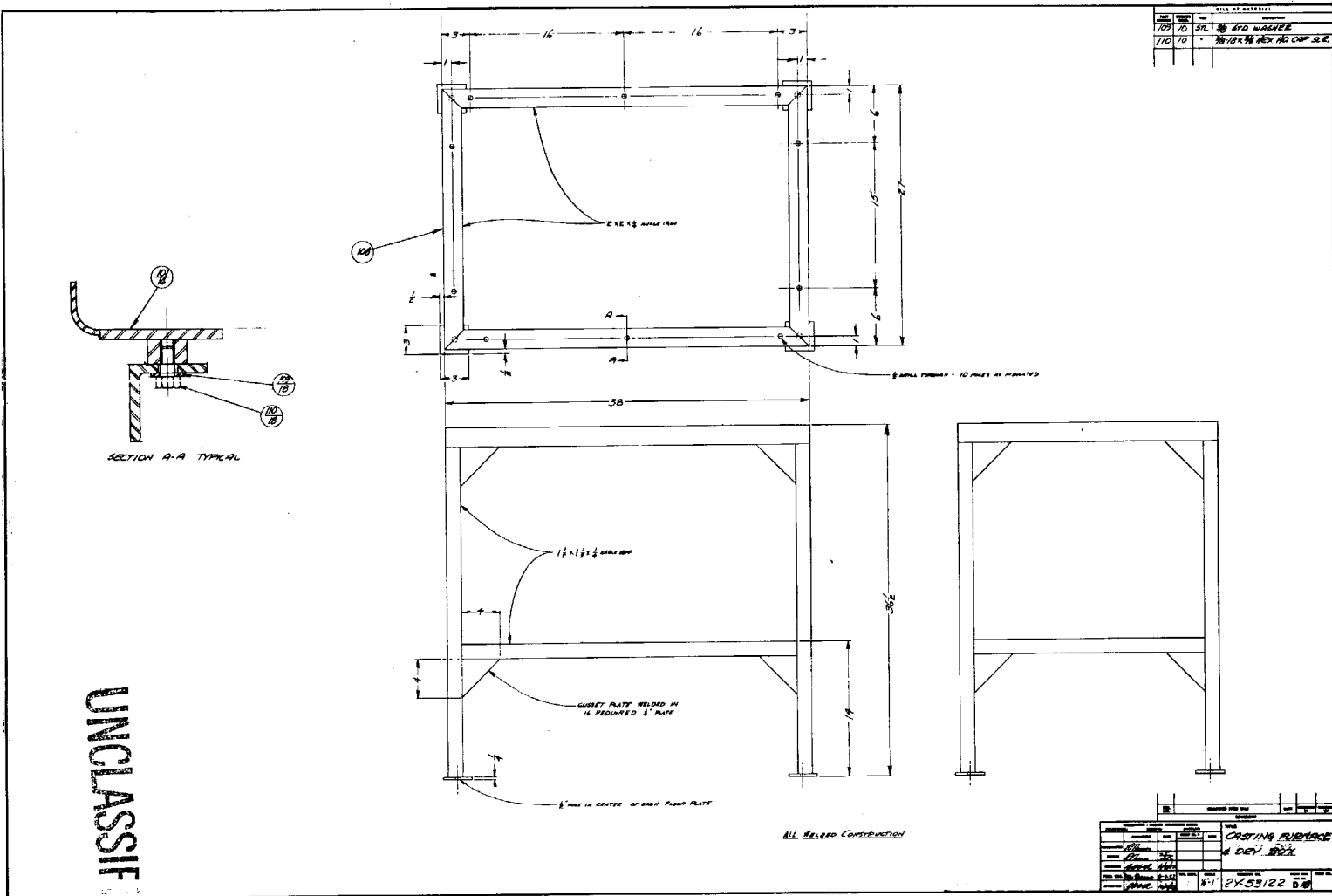
21

UNCLASSIFIED

UNCLASSIFIED



25



UNCLASSIFIED



UNCLASSIFIED

**UNCLASSIFIED**

REPORT LIBRARY

REC. FROM ga

DATE 3-11-53

RECEIPT X

**UNCLASSIFIED**

UNCLASSIFIED

1

UNCLASSIFIED